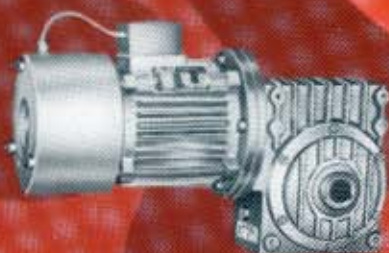
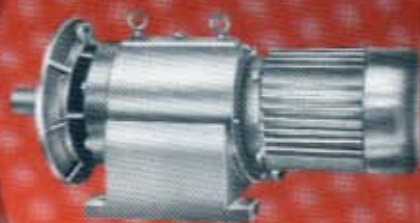
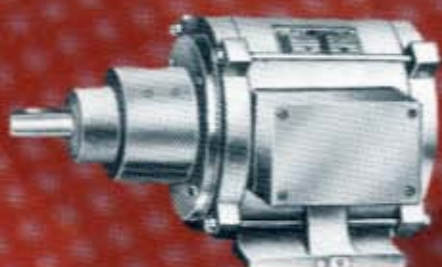


Shakti

GEARED MOTORS



SHAKTI IS POWER

GEARED UNITS

SHREE SHAKTI Geared Motors are designed to provide, a most efficient, economical and compact drive for low speed Applications. It is a most compact combination of an electric motor (A.C. or D.C.) and a gear box (helical, worm or epicyclic) converting the high speed of the prime mover to low speed with maximum efficiency. These units are manufactured under the supervision of trained, technical personnel, with strict quality control, and with latest technical knowhow.

SHREE SHAKTI Geared Motors and Gear Boxes are available in single, Double, Triple and Quadruple reductions. Combination gear units such as Heliworm, Hollow shaft etc., are also manufactured. They are available in foot, foot cum flange, Agitator type of mountings. The opposite page illustrates some of these designs.

The motor body, end covers, gear boxes are manufactured from close grained cast iron. All the gears and pinions are made out of top grade special alloy steels, which are heat treated and lapped for long life and silent running. The ball/roller bearings used are of good quality and are suitable for heavy duty application. The input and output shafts are of high quality steel. For low speeds, the motor shaft has integral pinion and the shaft is made out of special alloy steel.

The Electric Motor is designed for trouble free, economical performance. It seals off the input side of the gear box. Normally it is totally enclosed, fan cooled, continuously rated, Class B insulation operating on 400/440 volts, 3 phase, 50 cycles A.C. supply as per I.S:325. Class F or H insulation, IP 55 enclosure etc. can be offered.

The lubrication of bearings, gears, pinions is achieved by splash lubrication which provides ample and positive flow to all of them. Oil leakage is prevented due to the provision of oil seals. No special care is needed except periodic topping up of the lubricating oil to the required level.

SHREE SHAKTI GEARED MOTORS are warranted for Twelve Months against any manufacturing defects.

A questionnaire is given at the back for you to fill in. This when sent along with your enquiry, will enable us in offering you the most suitable geared motor for your application.

SPECIAL PURPOSE/CUSTOM MADE GEARED MOTORS. We undertake to manufacture Geared Motors as per your specifications if our Standard units do not fit in.

We can offer geared motors fitted with flame proof motors or Dual or Triple speed motors, motors of your choice, D.C. motors etc.,

RANGE OF GEARED MOTORS AND GEAR BOXES



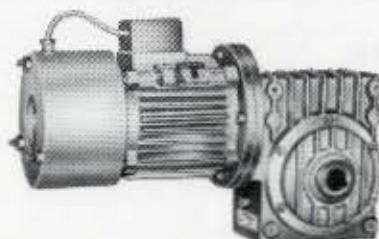
HELICAL GEARED MOTORS, Two stage reduction, horizontal foot or vertical flange mounting type continuously rated, rated power 0.09 Kw to 15 Kw, torques from 50 NM to 2000 NM, Output speed 0.1 RPM to 500 RPM.



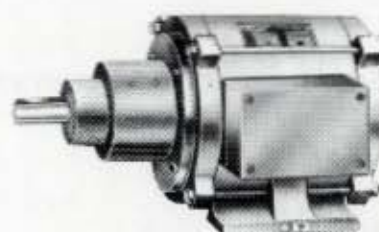
Similar to above mentioned HELICAL GEARED MOTORS but fitted with Flame Proof Electric Motors. Similarly Dual Speed, Triple Speed Electric Motors could be provided to obtain dual, Triple Speed Geared Motors. D.C. Gear Motors along with thyristor controller offered.



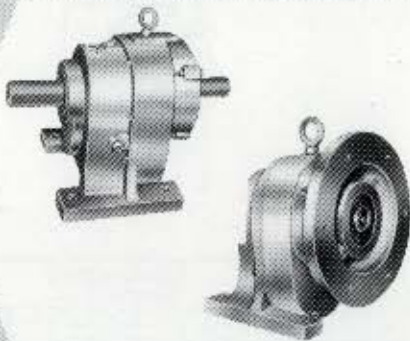
WORM GEARED MOTORS, foot or flange mounting type, rated power 0.09 Kw to 25 Kw, in various ratios giving Output Speed 12.5 to 200 RPM with proper selection of input speed and ratio, Output torque 20 NM to 6000 NM.



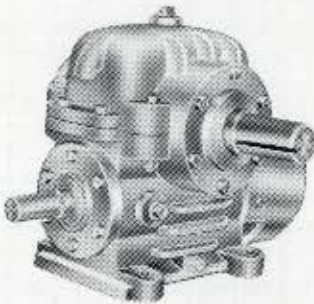
WORM GEARED MOTORS same as described above but with Hollow Output Shaft which enables to mount the Geared Motor on the driven shaft without any need for foundation etc. Electro-magnetic Disc brake is shown which can be provided to other type too.



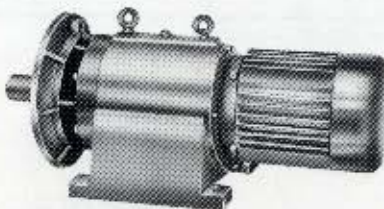
EPICYCLIC GEARED MOTORS give very low RPM in most compact size, very high reduction ratios are possible, thereby obtaining very low revolutions. These designs are not recommended for Heavy Duty Applications.



ADOPTA GEAR BOXES are Helical Inline Gear Boxes, designed to mount flange type I.E.C. Standard Electric Motors. Inline Helical Gear Boxes shown here are suitable for coupling to I.E.C. Standard motors. Foot Mounting. For the capacity refer to **STANDARD GEARED MOTORS**.



WORM GEAR BOXES from 1 1/8" Crs to 10 1/2" Crs 7:1 Ratio to 60:1 Ratio having universal, horizontal, flange type of mountings suitable for coupling to the prime mover.



HEAVY DUTY THREE STAGE GEARED MOTORS give low RPM in the most compact and in the most economical price. 0.37 Kw to 25 Kw, output torque 50 NM to 15,000 NM, output speed 3.0 RPM to 300 RPM, horizontal foot or flange mounting.

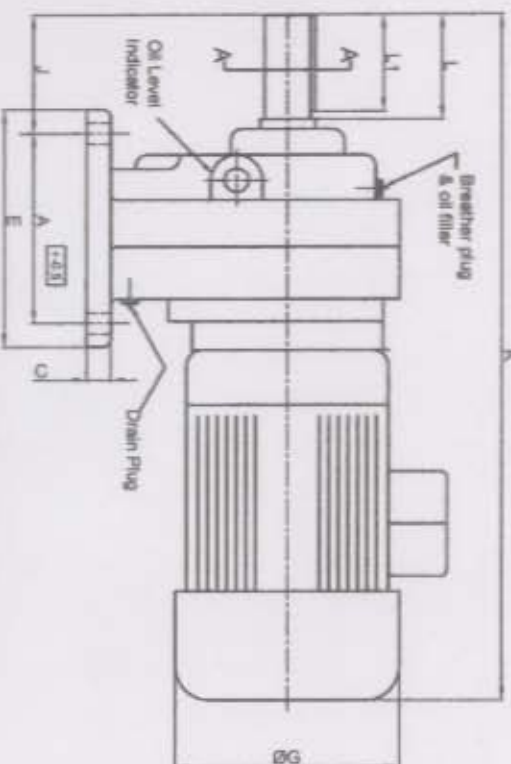
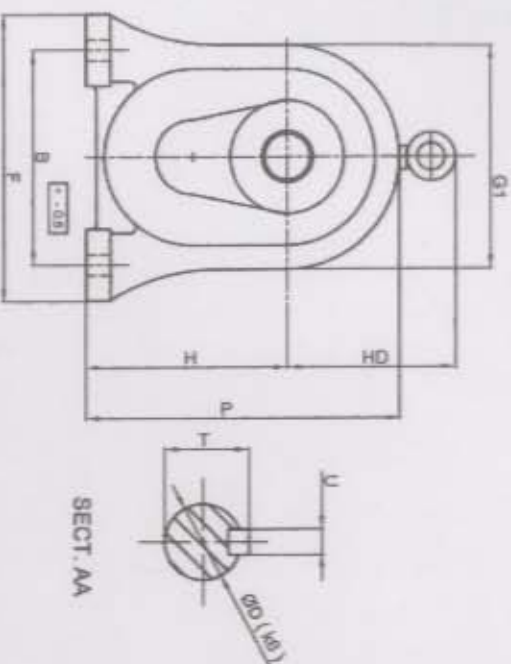


HOLLOW SHAFT HELICAL GEARED MOTORS flange mounting type are most suitable for stirrer duty. The depth of the stirrer can be adjusted freely without disturbing the arrangement.



CUSTOM BUILT-UNITS is our speciality. We can offer you various type of combinations such as mounting dimensions, type of insulation, degree of protection, dual speed, triple speed, flame proof, D.C. etc. We can develop a **GEAR DRIVE SYSTEM** as per your requirements.

DIMENSIONS OF FOOT MOUNTED DESIGNED B3



FRAME	Approx. Wt. in Kg	Overall Dimensions Wt ~ 1.0										Shaft Dimensions						Fitting Dimensions Tol. = +0.5					
		E	F	K	G	G1	P	P1	D (H8)	T	U	L	L1	A	B	B	C	J	H				
SG0	63			340	127			205	18	21.5	6	40	30	80	100	10	15	71	100				
	71	100	125	350	140	105	153	210															
	83			380	127			215															
SG1	71	140	150	370	140	134	179	222	24	27	8	50	40	115	120	10	12	62	112				
	80			385	175			239															
	85			400	127			238															
SG2	71	175	185	410	140	150	200	235	26	31	8	60	50	140	145	12	14	73	125				
	80			430	175			232															
	90S			475	182			252															
SG3	80			448	175			292															
	90			483	182			298															
	100	195	230	507	222	180	255	325	36	41.3	10	80	70	160	160	14	18	95	165				
SG4	112			530	222			325															
	90			598	182			341															
	100			612	222			371															
SG5	112	270	300	634	222	230	325	371	48	52.3	14	110	100	200	225	22	25	116	210				
	132			725	270			395															
	160			735	328			424															
SG6	100			645	222			416															
	112			667	222			416															
	132	370	395	706	270	300	405	440	60	64.4	18	140	130	300	320	24	28	140	255				
SG6	160			767	328			499															
	132			758	270			440															
	160	370	395	767	328	300	405	460	76	83	22	160	150	300	320	24	28	140	255				

DIMENSIONS OF FOOT MOUNTED
DESIGNED B3

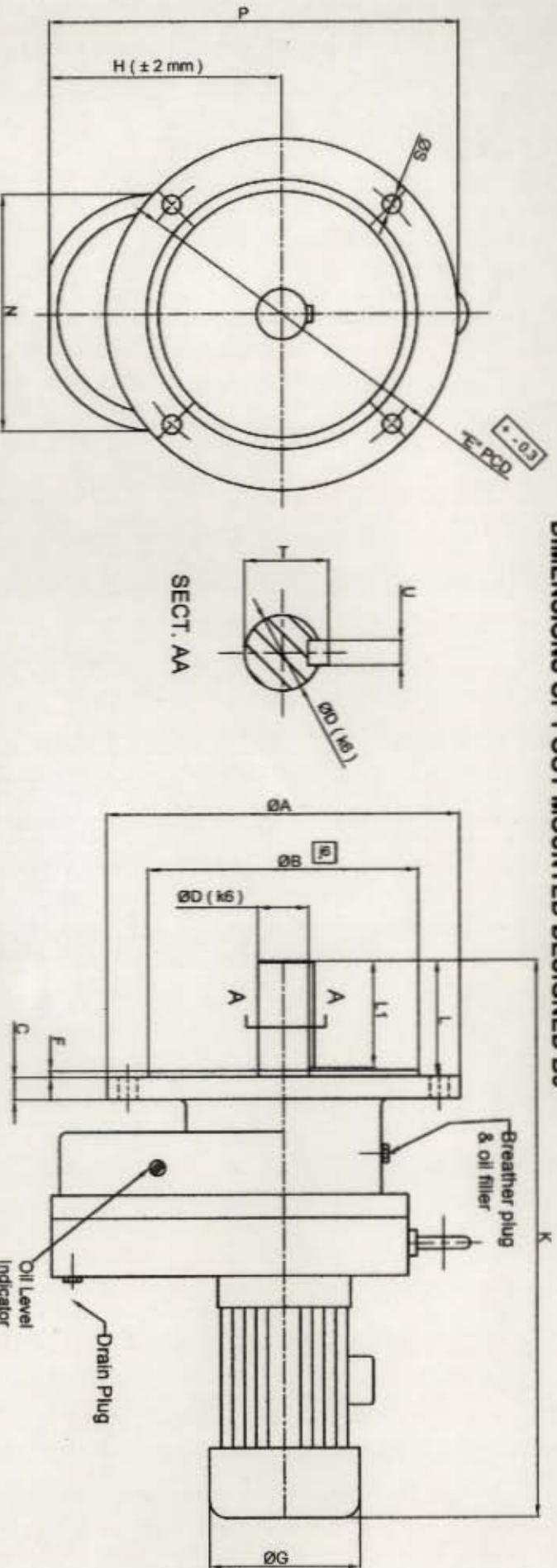
PREPAID BY - PRM
APPROVED BY - OSQ

REF. DRG. NO. - 08 / 10 / 086

All Dimensions are in mm. Subject to change without notice as cont. development is going on

SHAKTI ENGINEERS
8/F, New Empire Ind. Estate (A)
J.B. Nagar Khandivda Lane
Andheri (East) Mumbai-400 059
E-mail : shaktiengr@vsnl.com
Web : www.shaktiengr.com
Tel. : 022-2821 9870
Fax : 022-2835 1397

DIMENSIONS OF FOOT MOUNTED DESIGNED B5



FRAME		Approx. Wt. in Kg	Overall Dimensions tol. ± 1.0					Shaft Dimensions					Fixing Dimensions Tol. ± 0.5					
GEAR	MOTOR		G	K	P	N	D (mm)	T	U	L	L1	A	B	F	C	E	S	H
SG0	63		127	330	200	105	19	21.5	6	40	30	130	80	3.5	10	100	10	97
	71		140	340	207													
	63		127	365	208													
SG1	71		140	375	215	134	24	27	8	50	40	160	110	3.5	10	130	10	105
	80		175	394	232													
	63		127	396	223													
SG2	71		140	406	230	150	28	31	8	60	50	200	130	3.5	12	165	12	120
	80		175	425	247													
	90S		182	470	252													
SG3	80		175	468	277													
	90		182	512	281	180	38	41.3	10	80	70	250	180	4	16	215	14	150
	100		222	526	311													
SG4	112		222	546	311													
	90		182	597	336													
	100		222	611	366	230	48	52.3	14	110	100	300	230	5	20	265	18	205
SG5	112		222	633	366													
	132		328	724	390													
	160		370	735	419													
SG6	100		222	659	411													
	112		222	681	411	300	60	64.4	18	140	130	360	250	5	20	300	18	250
	132		270	772	436													
SG6	160		326	767	464													
	132		270	772	436	300	78	83	22	160	150	350	250	5	20	300	18	250
	160		328	767	464													

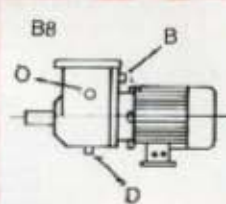
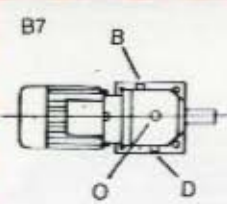
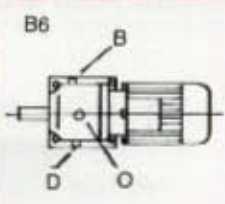
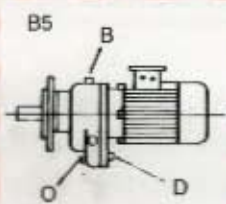
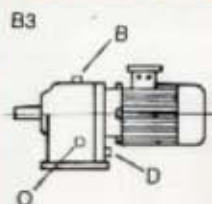
DIMENSIONS OF FLANGE MOUNTED DESIGNED B5

PREPARED BY - PRM
APPROVED BY - GSG

REF. DRG. NO. - 06 / 10 / 095

Shakti ENGINEERS
8F, New Empire Ind. Estate (A)
J.B. Nagar Kondivla Lane
Aurhenti (East) Mumbai-400 059
E-mail : shaktiengr@vsnl.com
Web : www.shaktiengr.com
Tel. : 022-2821 9870
Fax. : 022-2835 1397

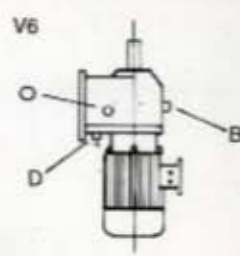
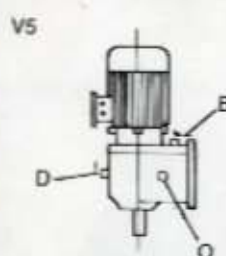
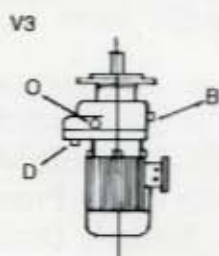
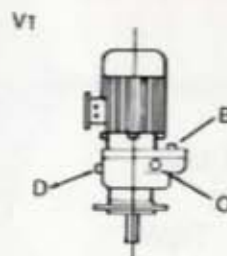
All Dimensions are in mm. Subject to change without notice as cont. development is going on



D - Drain plug

O - Oil level indicator

B - Breather plug and oil filler



QUESTIONNAIRE

Kindly fill up this questionnaire to enable us in recommending the most suitable GEARED MOTOR:

- 1) Power to be transmitted _____ Kw/Hp
- 2) Power supply _____ V _____ Ph. _____ C/s
- 3) Output RPM required: _____ RPM \pm _____ % (Please indicate the tolerance)
- 4) Variable speed needed No/Yes (Min. speed _____ Max. speed _____)
- 5) Type of mounting:
 - a) Horizontal B3/B5
 - b) Vertical V3/V6/V1/V5
- 6) Output torque needed _____ Kgm.
- 7) Service factor _____
 - a) Duty hrs/day i) 8 Hrs ii) 12 Hrs iii) 24 Hrs
 - b) Type of load i) Uniform ii) Moderate shock iii) Heavy shock iv) High inertia loads.
 - c) Number of starts/stops per Hour/shift
 - d) Reversible (if any) _____ Nos/Hour
- 8) Is the unit required to stop instantly _____ Yes/No (We can provide Electromagnetic brake on the motor, to stop the unit instantly)
Whether brake is to be provided _____ Yes/No.
- 9) Load on the output shaft
 - a) Radial _____ b) Axial _____
- 10) Details about worm gear box, if previously used
 - a) Ht. of centre _____ b) Ratio _____
- 11) Environment:
 - a) Ambient Temp. _____ $^{\circ}\text{C}$
 - b) Corrosive _____ Yes/No
 - c) Explosive _____ Yes/No
- 12) Class of Insulation needed: B / F / H
- 13) Type of enclosure: T.E.F.C. (IP44), Weather proof (IP55)
- 14) Method of starting - DOL / Star Delta / Any other method
- 15) Any other special requirements

Please tick whichever is applicable, we shall appreciate if you will send it typed on your letter head.

SHAKTI ENGINEERS

8-F, NEW EMPIRE INDUSTRIAL ESTATE (A), J.B. NAGAR,
KONDIVITA ROAD, ANDHERI (E), BOMBAY-400 059. TEL.: 8219870 • FAX : 91-22-8351397
E-mail: shaktiengr@vsnl.com